

# Umbra

The Residences at Portwood



Levels 3-6



## Plan A4

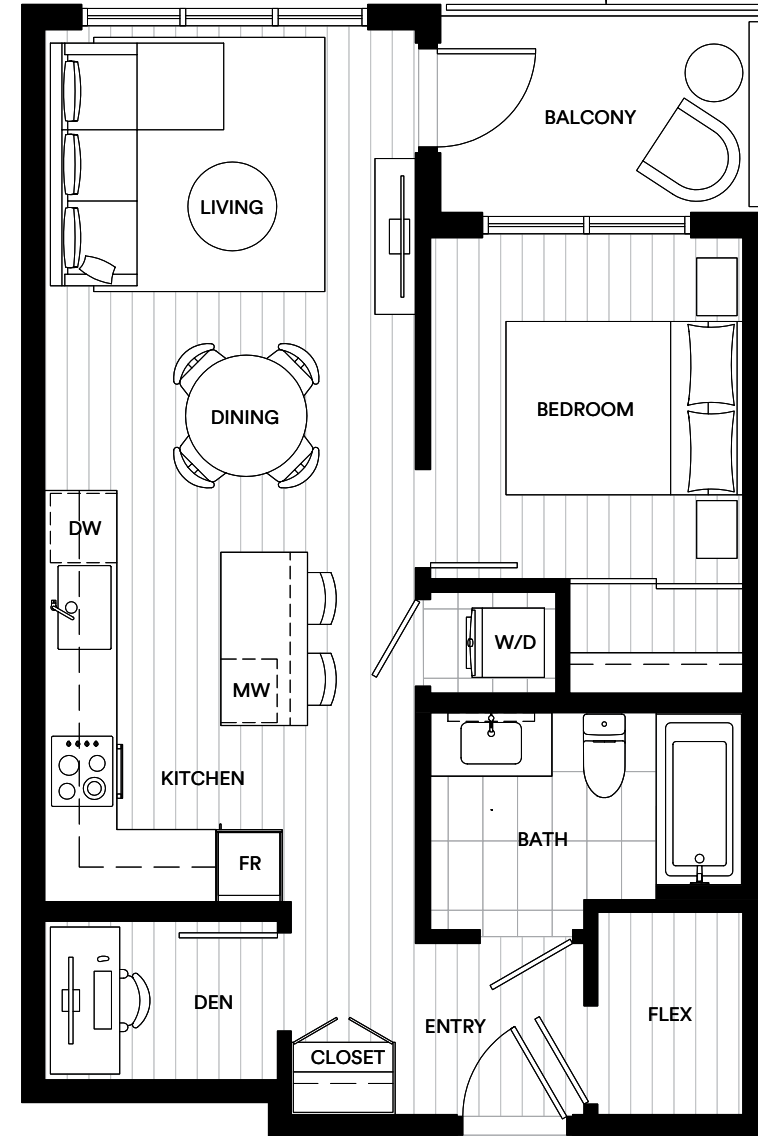
1 Bedroom 1 Bathroom +  
Den + Flex

Interior: 634-636 SF

Exterior: 56-57 SF

Total: 690-693 SF

EXTERIOR SPACES ARE BALCONIES AT  
LEVELS 4-6 AND DECKS AT LEVEL 3



### Adaptable Plan

This plan is mirrored in the following Units: 302, 402, 502, 602, 327, 427, 527 and 627

This is not an offering for sale. Any such offering can only be made with a disclosure statement. The developer reserves the right to make changes and modifications to the information contained herein without prior notice. Dimensions, strata plan sizes, areas, specifications, layout and materials are approximate only and subject to change without notice. E.&O.E.