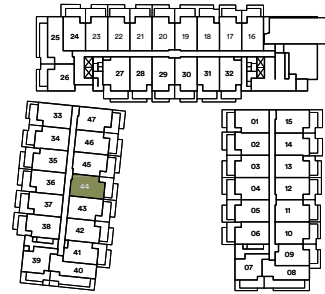
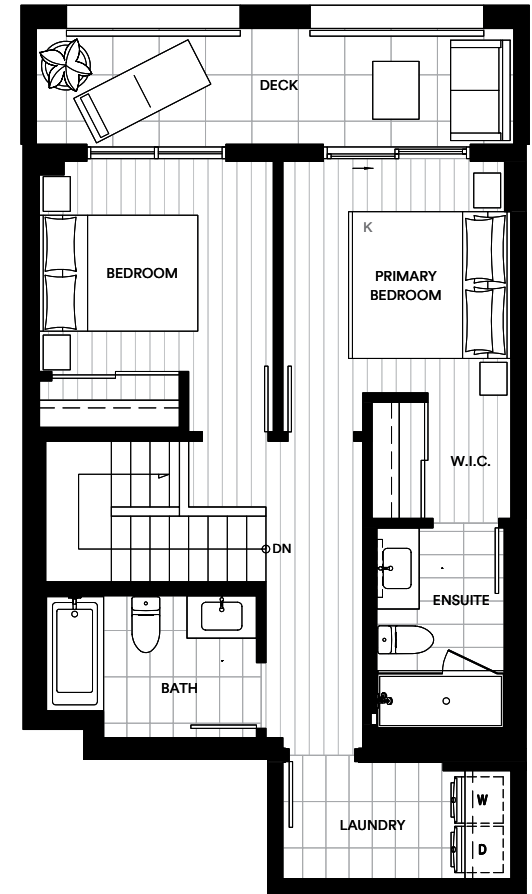
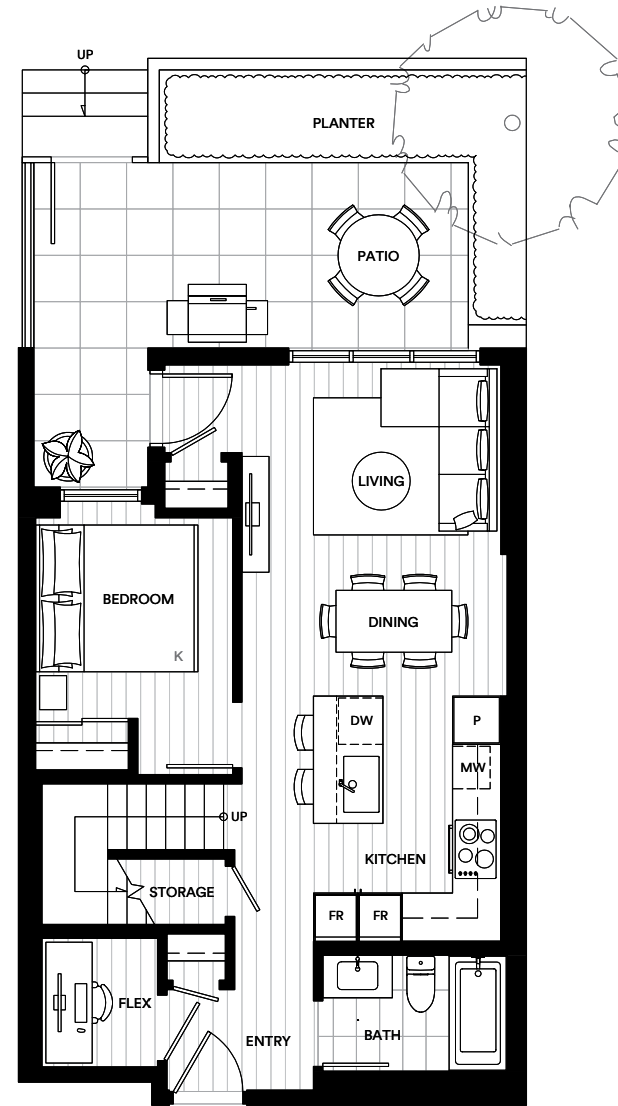


Umbra

The Townhomes at Portwood



Level 1-2



Plan F21

3 Bedroom 3 Bathroom + Flex

Interior: 1,254 SF

Exterior: 313 SF

Total: 1,567 SF

This is not an offering for sale. Any such offering can only be made with a disclosure statement. The developer reserves the right to make changes and modifications to the information contained herein without prior notice. Dimensions, strata plan sizes, areas, specifications, layout and materials are approximate only and subject to change without notice. E.&O.E.