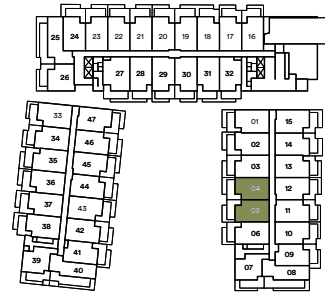
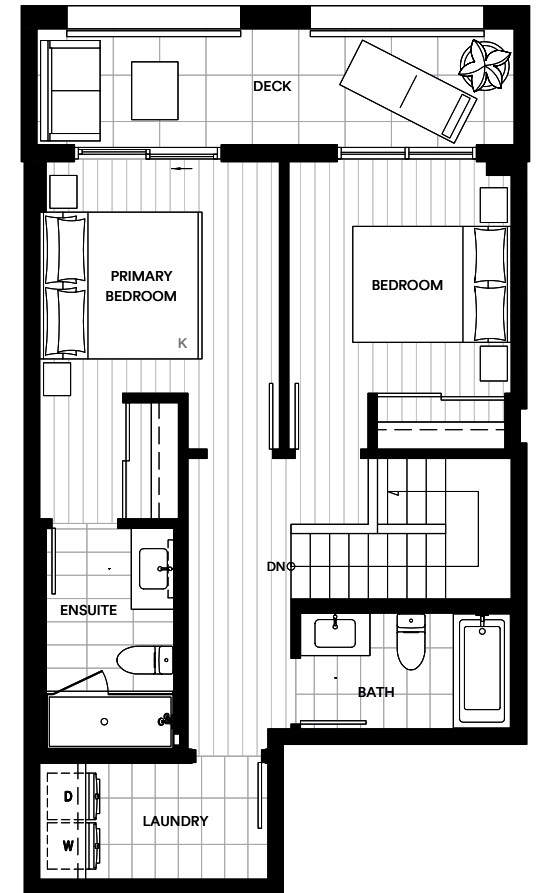
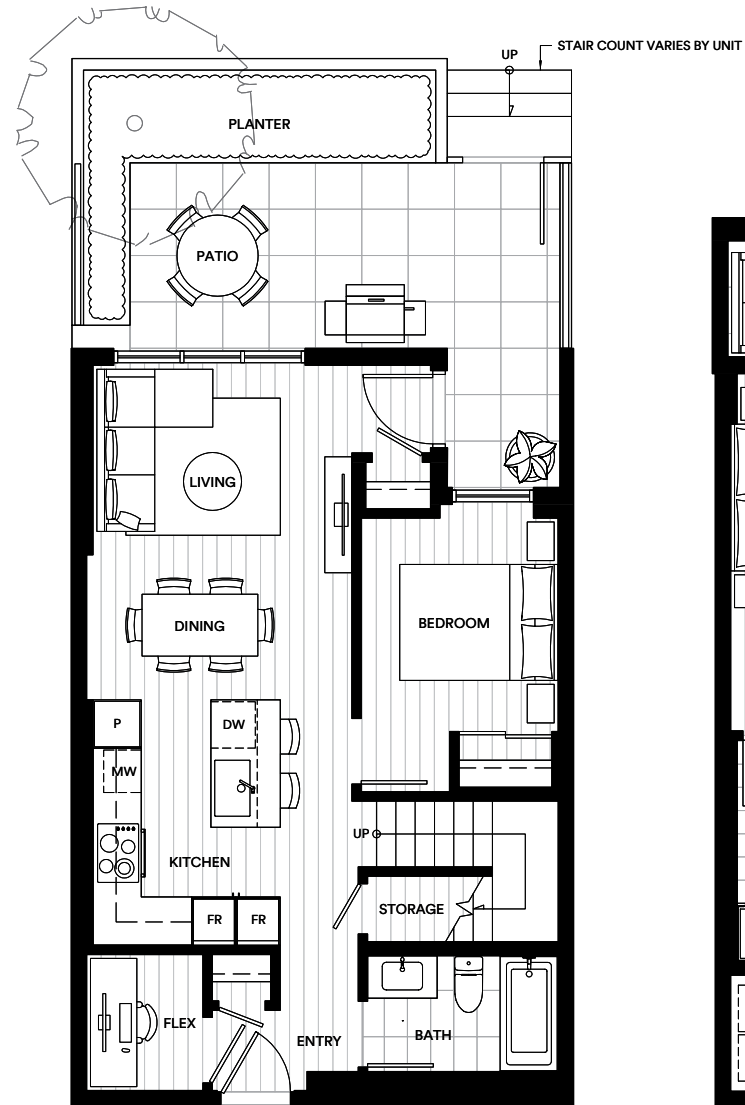


Umbra

The Townhomes at Portwood



Level 1-2



Plan F23

3 Bedroom 3 Bathroom + Flex

Interior: 1,255-1,256 SF

Exterior: 311-313 SF

Total: 1,567-1,568 SF



This plan is mirrored in Unit 5

This is not an offering for sale. Any such offering can only be made with a disclosure statement. The developer reserves the right to make changes and modifications to the information contained herein without prior notice. Dimensions, strata plan sizes, areas, specifications, layout and materials are approximate only and subject to change without notice. E.&O.E.