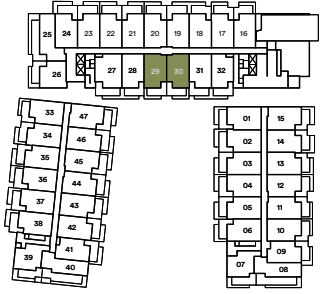
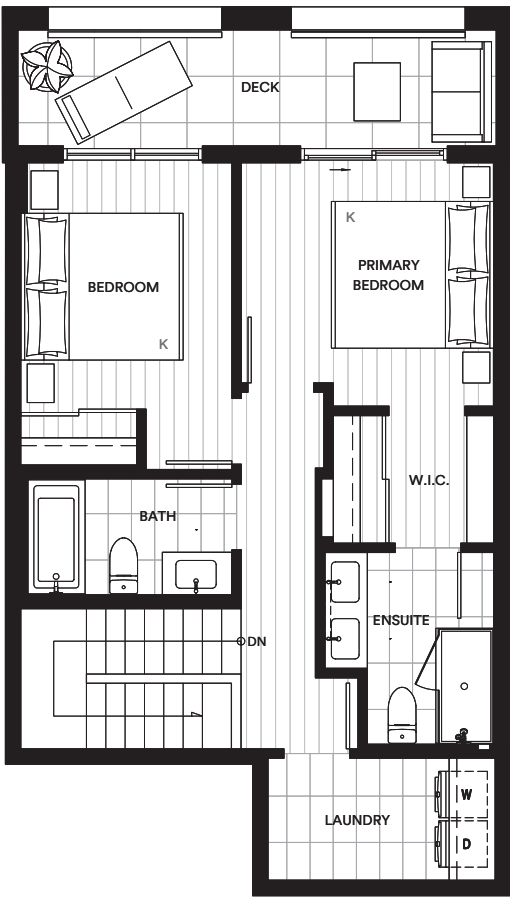
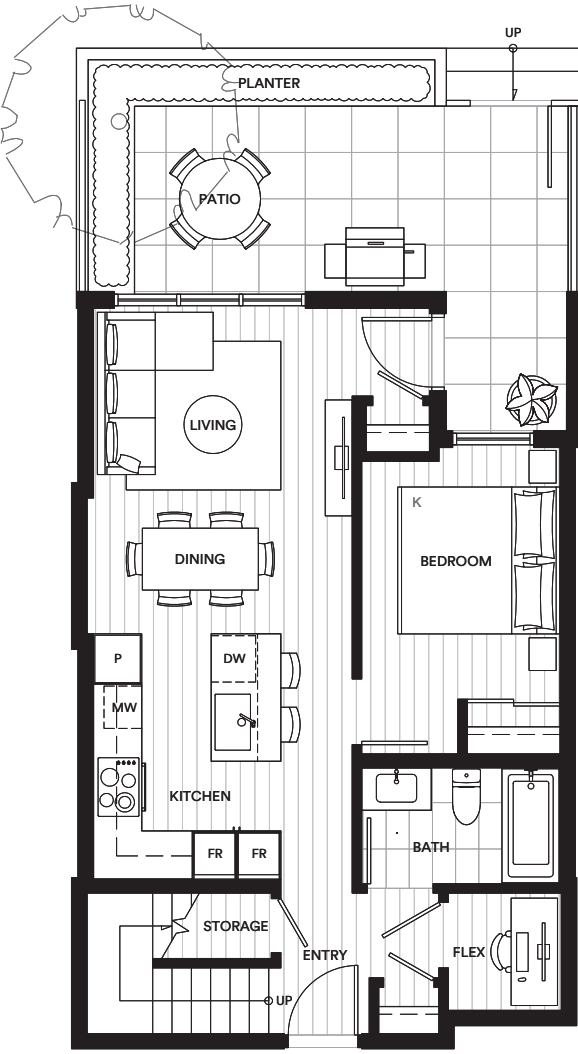


Umbra

The Townhomes at Portwood



Level 1-2



Plan F9

3 Bedroom 3 Bathroom + Flex

Interior: 1,271-1,273 SF

Exterior: 318 SF

Total: 1,589-1,591 SF



This plan is mirrored in Unit 29

This is not an offering for sale. Any such offering can only be made with a disclosure statement. The developer reserves the right to make changes and modifications to the information contained herein without prior notice. Dimensions, strata plan sizes, areas, specifications, layout and materials are approximate only and subject to change without notice. E.&O.E.