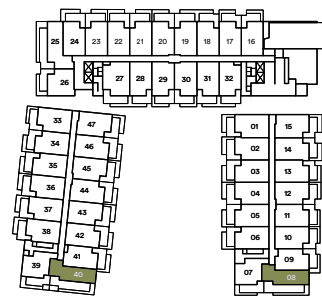
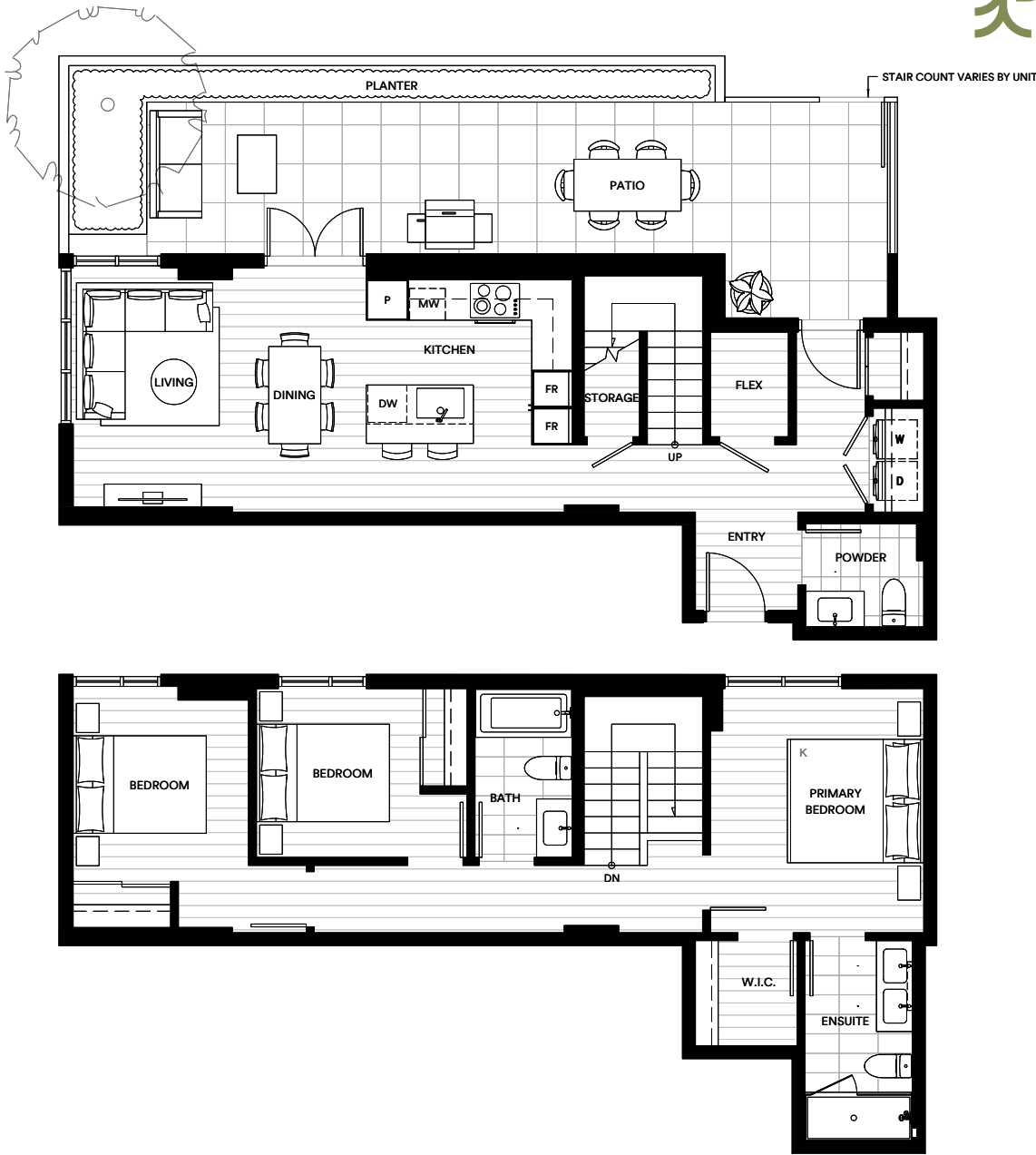


Umbra

The Townhomes at Portwood



Level 1-2



Plan G1

3 Bedroom 2.5 Bathroom + Flex

Interior: 1,337 SF

Exterior: 329-342 SF

Total: 1,666-1,679 SF



This is not an offering for sale. Any such offering can only be made with a disclosure statement. The developer reserves the right to make changes and modifications to the information contained herein without prior notice. Dimensions, sizes, areas, specifications, layout and materials are approximate only and subject to change without notice. E.&O.E.