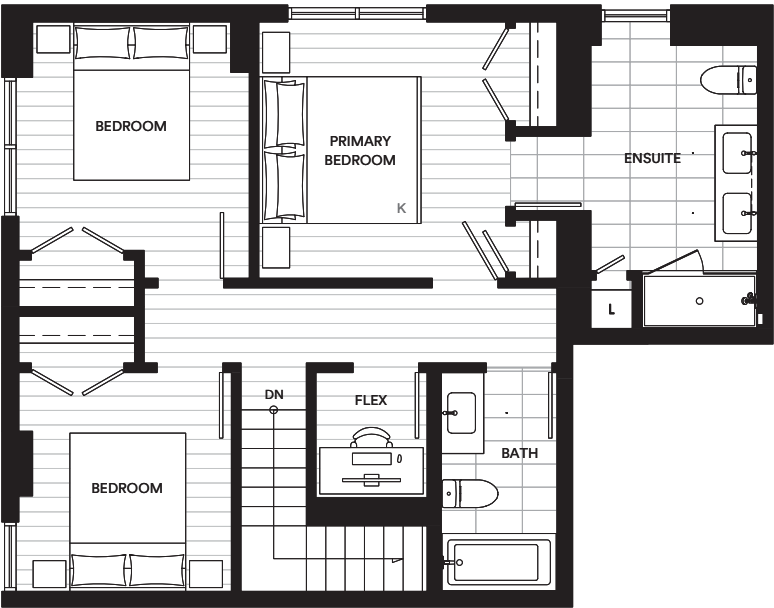
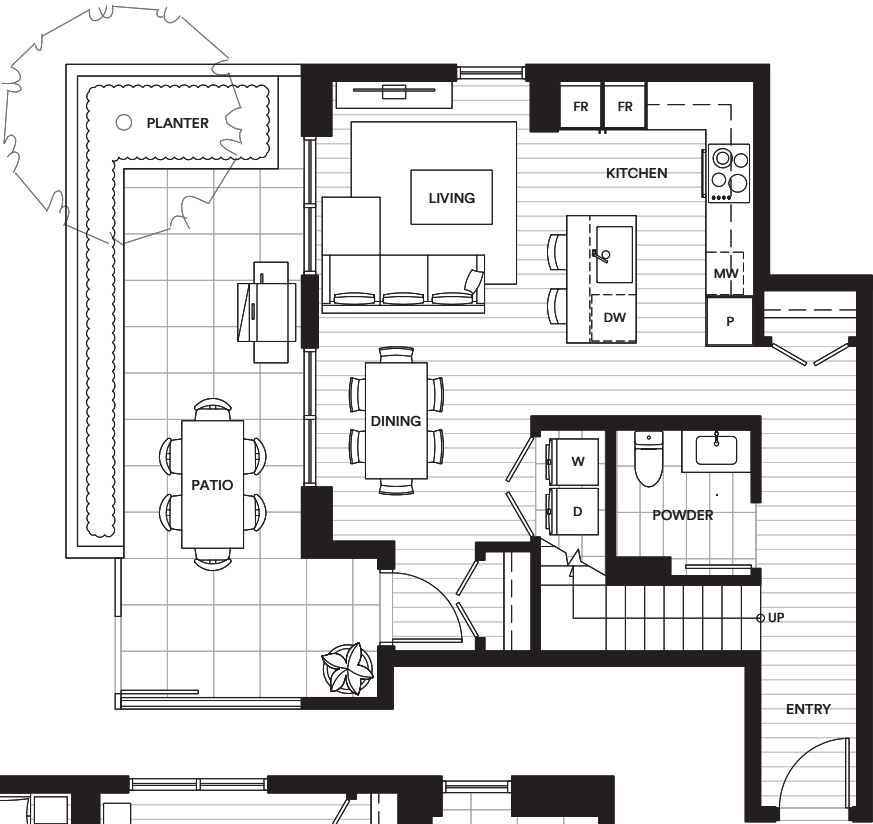


Umbra

The Townhomes at Portwood



Level 1-2



This is not an offering for sale. Any such offering can only be made with a disclosure statement. The developer reserves the right to make changes and modifications to the information contained herein without prior notice. Dimensions, sizes, areas, specifications, layout and materials are approximate only and subject to change without notice. E.&O.E.

Plan H1A

3 Bedroom 2.5 Bathroom + Flex

Interior: 1,359 SF

Exterior: 202 SF

Total: 1,562 SF